

SDX Series

Explosion-proof High Speed Dome Camera



Main Features



Marine grade
stainless steel 316L
material



Explosion-proof
certified:
ATEX II 2G Exd IIC T6,
II 2D Ex t IIIC T80°C



IP 68 (2m/2h)



Vandal-proof
IK10 ratings



Weatherproof



Accommodate with
other selected 3rd
party dome camera



Operating
Temperature
-40°C to 60°C

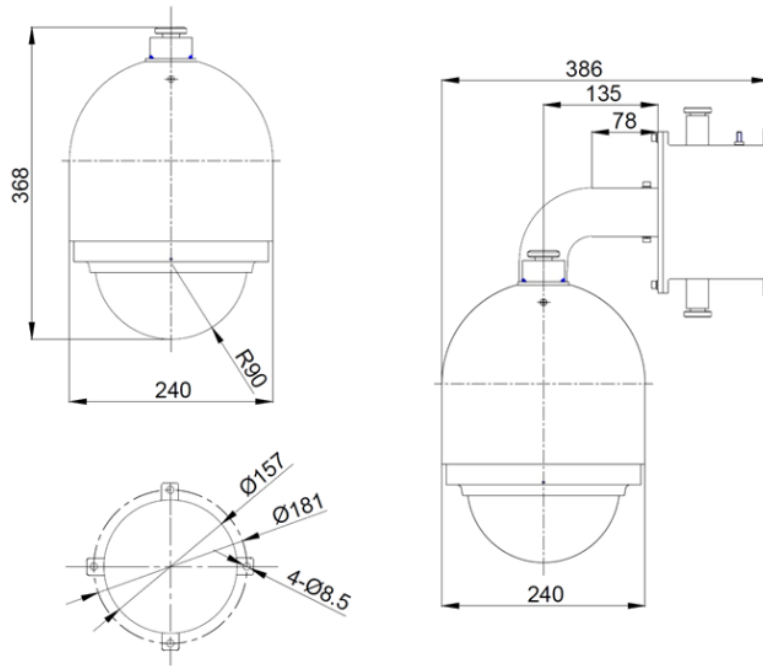
Standard fitted
sunshield, heater,
blower, bracket and
explosion-proof power
supply box

General	
Certification	ATEX II 2G Exd IIC T6, II 2D Ex t IIIC T80°C Db
Ingress Protection	IP68(2m/2hr)
Operating Temperature	-40°C to 60°C
Relative Humidity	95%
Mechanical	
Material	Stainless steel 316L
Overall Dimension (WxHxD)	240×549×386mm (with wall bracket and integrated power supply box)
Cable Entries	1×G3/4" Explosion-proof cable entry, inner hole Φ15mm
Weight (without camera and lens)	22.5kg
Electrical	
Operating Voltage	AC24V ~ AC260V 50/60Hz, DC24V (please specify)
Current	≤500mA Current
Standard Fitted	
Sunshield	Yes (can be excluded upon request)
Thermostatically Controlled Heater, Blower, Wall Bracket and Integrated power supply box	Yes (can be excluded upon request)
Optional Accessories	
Built-in Optical Single Mode	FOSDX-SM
Built-in Optical Multi Mode Transmitter	FOSDX-MM

IP Camera/Lens

	3MP, 33x Zoom, IP		2MP, 30x Zoom, IP with Self-learning Video Analytics	
Sensor	1/2.8"		1/2.8"	
Focal Length	4.6 - 152.0 mm		4.3 - 129 mm	
Focus	F1.6		F1.6 - F4.7, autofocus.6	
Optical Zoom	33x		30x	
Horizontal Angle of View	1.9° - 55.4°		2.3° - 63.7°	
Effective Pixels (HxV)	2065 x 1553		1920 x 1080	
Shutter Time	1~1/10K sec		Automatic, Manual (1~1/10K sec)	
Illumination Requirement	Color: 0.04Lux Black & White: 0.002Lux		Color: 0.1 lux Black & White: 0.03 lux	
Day/Night	Automatically removable IR-cut filter		Automatic, Manual	
Compression	H.265/H.264/MJPEG		H.264 (MPEG-4 Part 10/AVC), Motion JPEG	
Streaming	Up to 4 individually configurable streams in H.265/H.264/MJPEG Configurable resolution/frame rate/bandwidth LBR/VBR/CBR in H.265/H.264		Multi-stream H.264 and Motion JPEG	
Pan/Tilt Range	Pan: 0~360° endless	Tilt: -10~100°	Pan: 0~360° endless	Tilt: -10~100°
Manual Speed	Pan: 0.1~90°/s	Tilt: 0.1~55°/s	Pan: 0.1~90°/s	Tilt: 0.1~55°/s
Preset Speed	Pan: 400°/s	Tilt: 300°/s	Pan: 400°/s	Tilt: 300°/s
Preset	256 presets		500 named presets	
PTZ Mode / Privacy Zones	8 Sequence, 8 cruise, 4 auto pan		Up to 64 zones, 3D privacy mask supported	
Corridor Mode / Tours	90°, 180°, 270° rotation		10 named guard tours	
Onvif	Profile S/G/Q/T conformant		Profile S conformant	
Interface	RS485, RJ45, Alarm in x4, Alarm out x2, Audio in, Audio out Terminal Block		RS485, RJ45, Alarm in, Alarm out, Audio in, Audio out	
Analytics Events	Motion Detection/Audio detection		Objects in Area, Loitering, Crossing Beam, Object Appears or Enters Area, Object Not Present in Area, Objects Enter Area, Objects Leave Area, Object Stops in Area, Direction Violated, Tamper Detection	

Outline Dimensions



Model & Ordering Code

SDX - 316L - X

Camera Module Options

33x3M : 3MP, 33x Zoom, IP

30x2M : 2MP, 30x Zoom, IP with Self-learning Video Analytics